



WELCOME!

Continuous Monitoring Systems Course



Disclaimer: Any pictures herein are for educational purposes only and not intended to be an endorsement of any particular manufacturer, vendor, or product

Instructors

- John Doe
 - Title



- Jane Doe
 - Title



01 Name
02 Job Title
03 Expectation



INTRODUCTIONS

Course Introduction

- 01** Course Goal
- 02** Course Outline/Topics
- 03** Course Schedule
- 04** Course Materials
- 05** Administrative Information

Course Goal

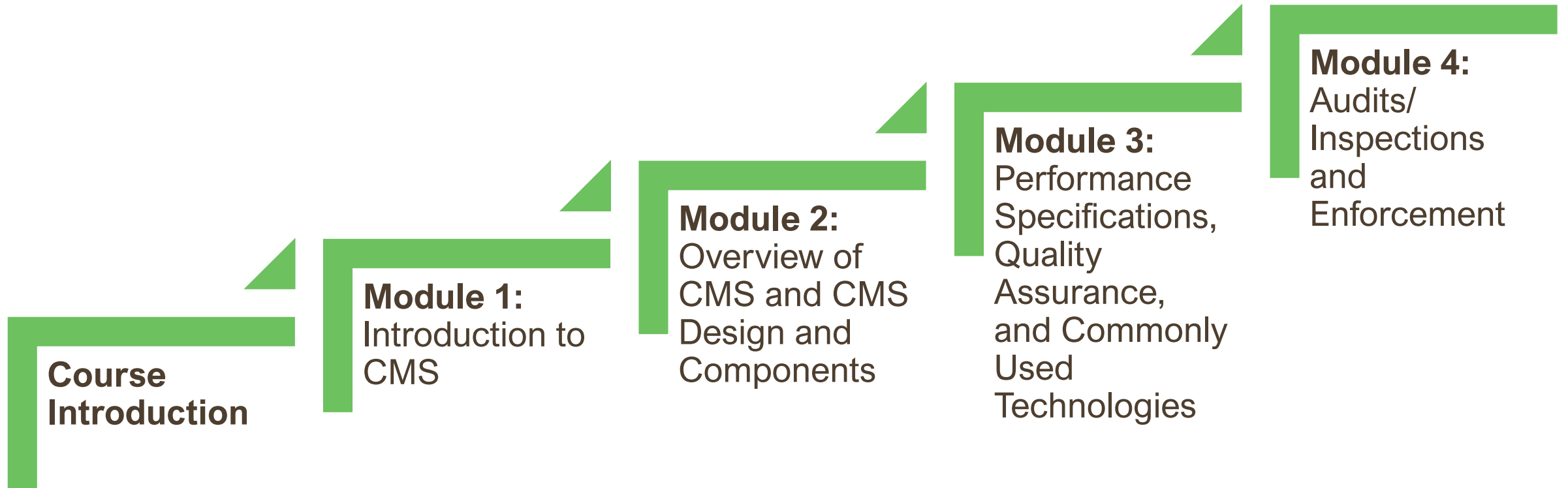
Upon completing this course, you will gain a basic understanding of Continuous Monitoring Systems (CMS). You will be able to use the knowledge gained on the following topics to assess the accuracy of CMS data and the ongoing compliance of sources monitored by CMS:

- Types and purposes of CMS
- Review of regulatory basis for CMS
- Analytical techniques
- Systems design and components
- Performance specifications and quality assurance requirements
- Commonly used technologies
- Audits and inspections
- Enforcement procedures



Course Outline

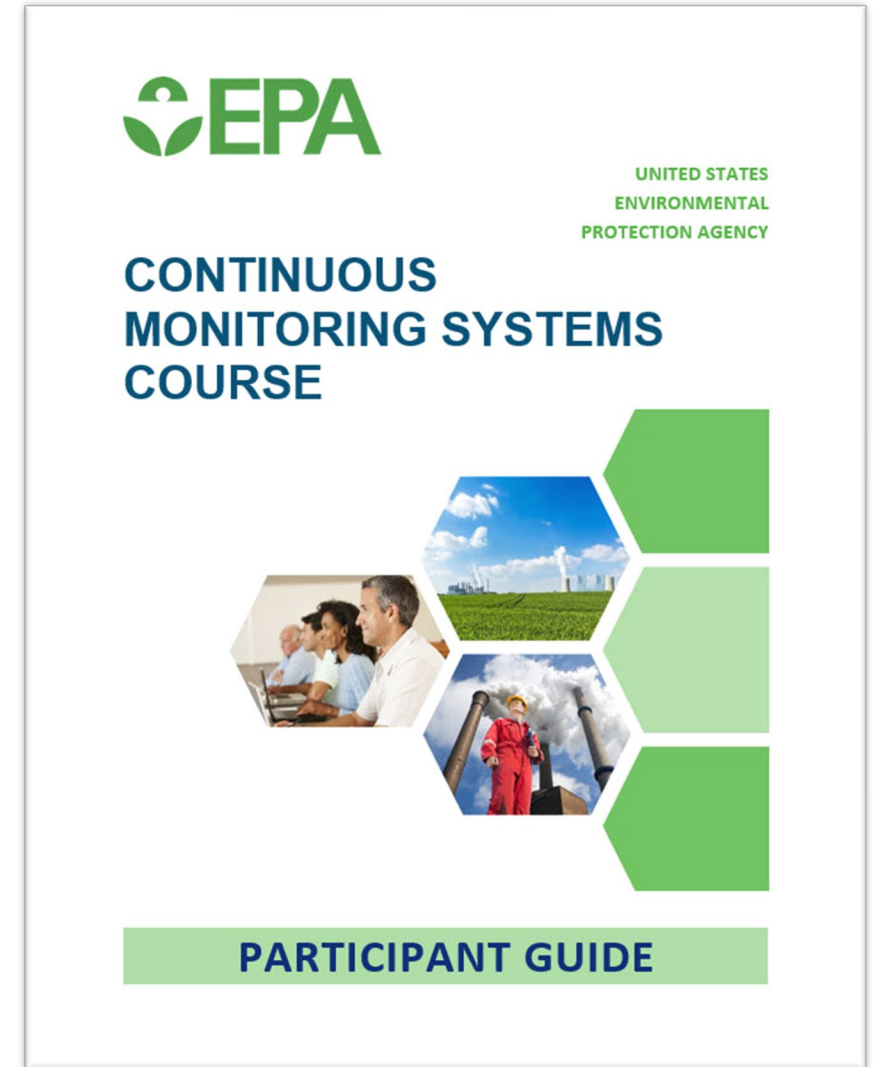
This course is arranged into four modules:



Course Materials

You should have the following course materials:

- Participant Guide
 - Handouts



Course Schedule

Tuesday	Course Introduction
	Module 1: Introduction to CMS
	Begin Module 2: Overview of CMS and CMS Design and Components
Wednesday	Wrap-up Module 2: Overview of CMS and CMS Design and Components
	Begin Module 3: Performance Specifications, Quality Assurance, and Commonly Used Technologies
Thursday	Continue and Wrap-up Module 3: Performance Specifications, Quality Assurance, and Commonly Used Technologies
Friday	Begin and Wrap-up Module 4: Audits/Inspections and Enforcement
	Post-Training Assessment and Course Evaluation



Ground Rules

- Start and Stop on-time (Class hours: 8:00 a.m. – 4:30 p.m.)
- Return promptly from lunch and breaks



Where's the Coffee?

- Location of restrooms, coffee and vending areas, lunch options
- Emergency evacuation information
- Smoking area
- Parking



Questions

